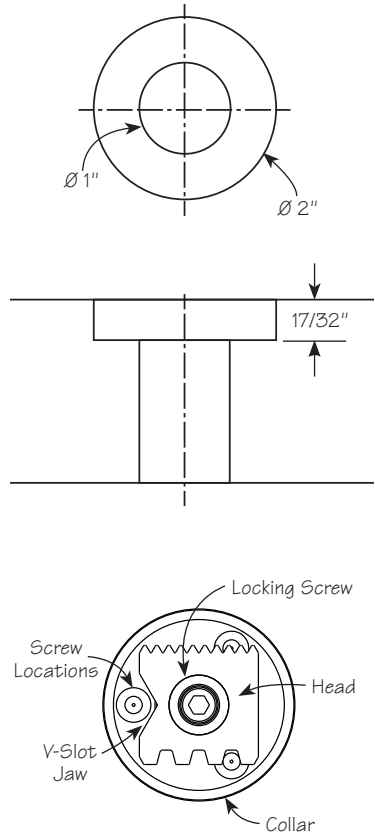


# Recessed Bench Stop

Inspired by the Millers Falls #56 Bench Hook, the head on this recessed bench stop can be rotated to expose one of four jaws (flat, V-slot, small teeth, large teeth) to suit the work at hand. The post has a wedge-lock mechanism that anchors it firmly in position. When the locking screw is released, an internal spring raises the head to project up to 3/4". It is designed for use in a stepped through hole in any workbench top that is at least 1" thick.

## Installation

1. On your workbench, lay out and mark the desired location for the recessed bench stop such that it is in line with the existing dog holes or bench vise.
2. Drill a 2" diameter hole to a minimum depth of 17/32" with a Forstner bit. This mortise will accept the stop's collar.
3. Drill a 1" diameter through hole inside the 2" hole with a Forstner bit. This hole will receive the spring-loaded post.
4. Drop the bench stop into the stepped hole to test the fit. The upper edge of the collar should be flush with or just slightly below the top surface of the workbench.
5. Loosen the locking screw in the center post with the hex key provided. The internal spring will raise the head of the stop. Set the head at about 1/2" high. (The head should not be able to rotate independently of the body/collar assembly.)
6. Rotate the bench stop so that the head is oriented appropriately for your chosen clamping direction.
7. Ensure that none of the screw locations are in line with each other in relation to the grain of the bench top. If they are, rotate the bench stop 90°.
8. Mark this location.

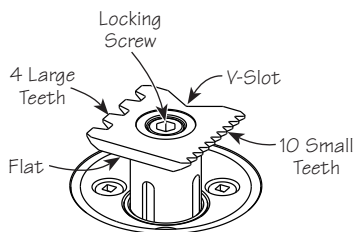


9. Release the locking screw and allow the head to project to its full 3/4" height. (The head should now be able to rotate independently of the body/collar assembly.)
10. Position the V-slot jaw in the head between one of the screw holes in the collar. Transfer the three screw locations.
11. Remove the bench stop and drill the three pilot holes, 1/8" diameter by 9/16" deep.
12. Drop the bench stop back into the stepped hole, aligning it with the location marks.
13. Secure the collar to the workbench with the three #8 × 1" wood screws, rotating the head as required to gain access to the screws.

## Setting the Orientation

1. Loosen the locking screw.
2. The internal spring will raise the head of the stop to the full 3/4" height.
3. Rotate the head to expose the required jaw.

**Note:** The flat jaw provides a simple stop; it does not clamp nor mar the workpiece. The V-slot jaw centers and holds narrow stock. The jaw with the ten small teeth bites into thin stock, while the jaw with the four large teeth bites into larger workpieces.



## Setting the Height

1. While the locking screw is still loosened, press down on the post to adjust the head's projection to the desired height (up to 3/4").
2. Tighten the locking screw with the hex key to lock the projection and engage the wedge-lock mechanism.
3. When you are finished using the bench stop, you can set the head flush with the workbench top so it is out of the way when not in use.

